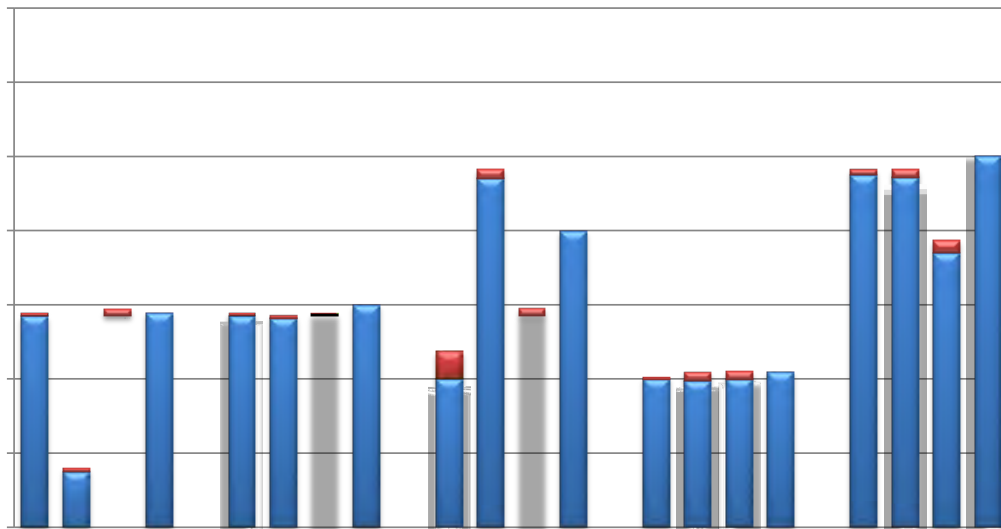


## University of Missouri, Tuition and Required Fees History Non-Resident Undergraduate Students

Tuition										
Academic Year (30 Credit Hours)										
	FY2011	FY2012	FY2013	FY2014	FY2015	FY2016	FY2017	FY2018	FY2019	FY2020
<b>Columbia</b>	19,383	20,643	22,191	22,569	23,247	23,943	24,660	25,179	25,707	26,991
<b>Kansas City</b>	18,957	19,905	20,502	20,850	21,162	21,330	21,969	23,067	23,550	24,729
<b>Rolla</b>	19,383	20,643	22,398	23,385	24,087	24,810	25,554	26,322	26,874	27,921
<b>St Louis</b>	18,957	19,905	21,537	24,429	24,795	25,512	26,277	27,327	27,900	29,295

Tuition and Required Fees										
Academic Year (30 Credit Hours)										
	FY2011	FY2012	FY2013	FY2014	FY2015	FY2016	FY2017	FY2018	FY2019	FY2020
<b>Columbia</b>	20,516	21,784	23,366	23,764	24,460	25,166	25,892	26,506	27,042	28,348
<b>Kansas City</b>	20,191	21,197	21,833	22,203	22,535	22,714	23,363	24,490	25,003	26,209
<b>Rolla</b>	20,543	21,879	23,666	24,675	25,396	26,144	26,897	27,693	28,274	29,368
<b>St Louis</b>	20,220	21,206	22,883	24,429	24,795	25,512	26,277	27,327	27,900	29,295



For St. Louis FY2014 is a comprehensive base tuition rate which combines base tuition per credit hour with fees required of all students.

Source: Board Papers